

賽馬會中樂360

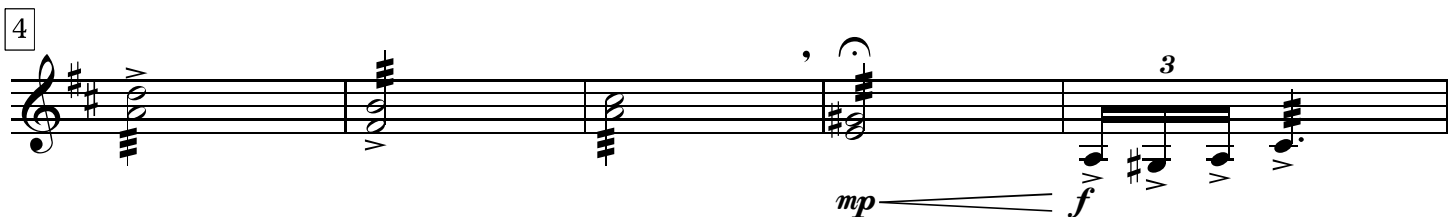
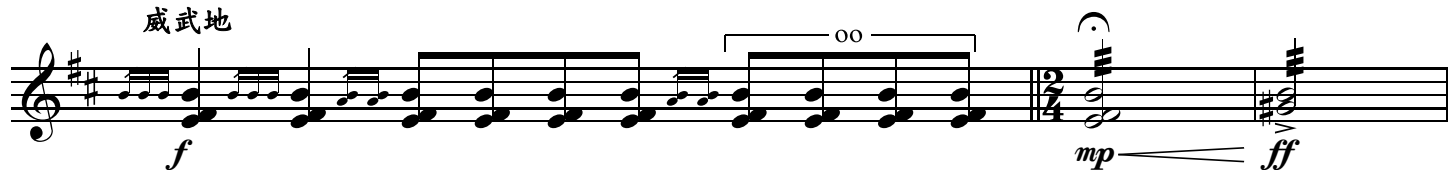
十面埋伏

(初級)

劉文金、趙咏山 編曲
譚逸昇 改編

【列營】

威武地



33



38



44

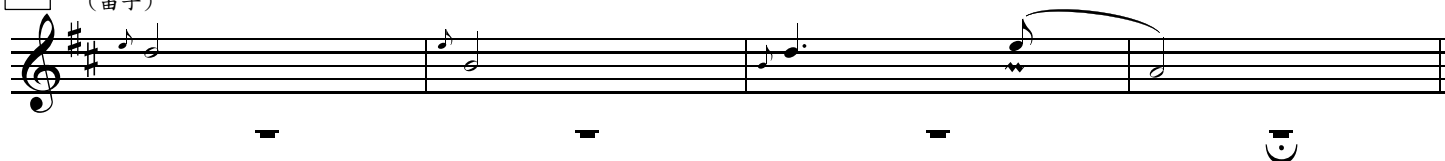
由慢漸快



45



49

【吹打】自由
(笛子)

53

中速



58



65



70



75



81

【埋伏】 由慢漸快



86



91



96

稍漸慢



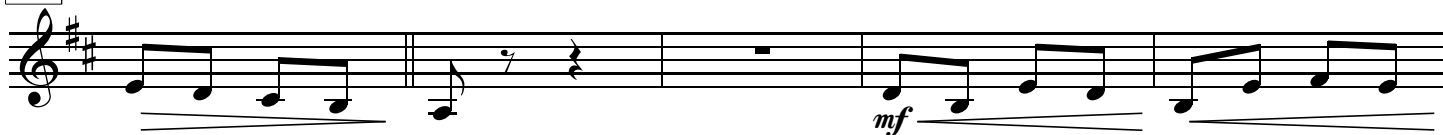
101



106



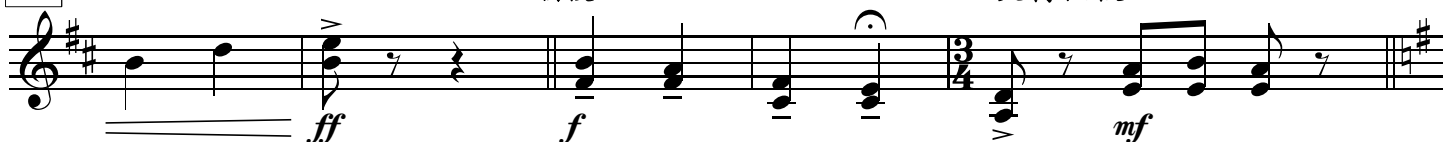
111



116



121



126



131



136



142



149 【奏凱】

Musical notation for measure 149, starting with *mf* dynamic. The notation includes a treble clef, a key signature of one sharp (F#), and a 3/4 time signature. The melody consists of eighth and quarter notes with rests.

Musical notation for measure 153, continuing the melody with eighth and quarter notes.

Musical notation for measure 157, ending with *f* dynamic. The notation includes a treble clef, a key signature of one sharp (F#), and a 3/4 time signature.

Musical notation for measure 162, continuing the melody with eighth and quarter notes.

Musical notation for measure 167, continuing the melody with eighth and quarter notes.

172 *molto rit.* 慢

Musical notation for measure 172, featuring triplets and a *molto rit.* (slow) marking. The notation includes a treble clef, a key signature of one sharp (F#), and a 3/4 time signature.

Musical notation for measure 176, featuring triplets. The notation includes a treble clef, a key signature of one sharp (F#), and a 3/4 time signature.

Musical notation for measure 180, ending with *mp* dynamic. The notation includes a treble clef, a key signature of one sharp (F#), and a 3/4 time signature. It features a long note with a fermata and a final chord.